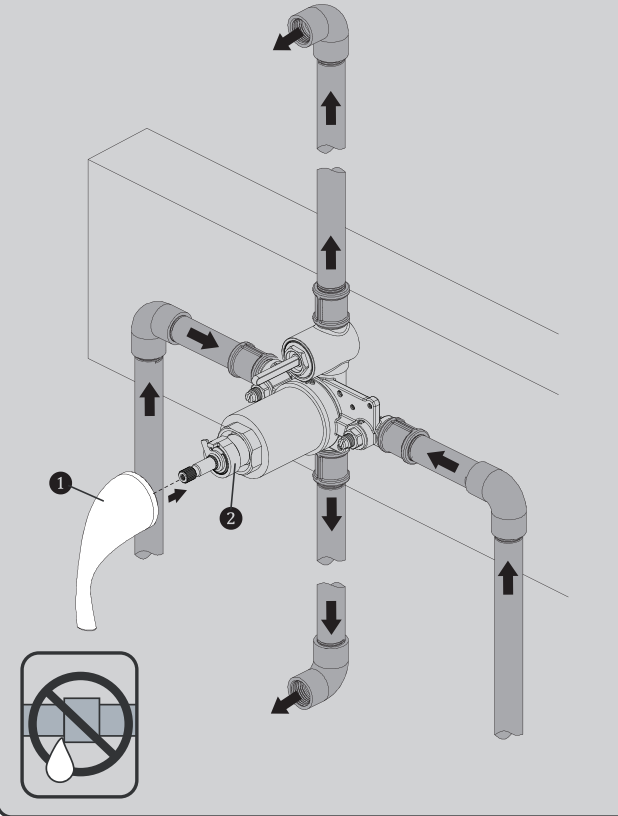


10 FLUSHING THE WATER OUTLETS AND CHECKING FOR LEAKS

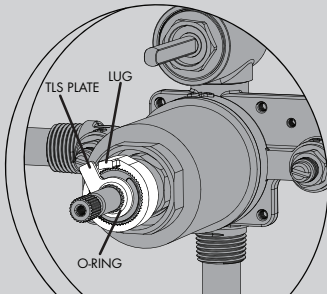
Place the Handle 1 on the Valve Cartridge Spindle 2 and turn the Handle 1 clockwise to the full on mixed position. Turn on the HOT and COLD water supply lines and allow the water to flow from the outlets for one minute, or until all foreign matter has been flushed out. Check for leaks. Shut off the water at the Valve and supply lines. Remove the Handle 1.



11 TEMPERATURE LIMIT ADJUSTMENT

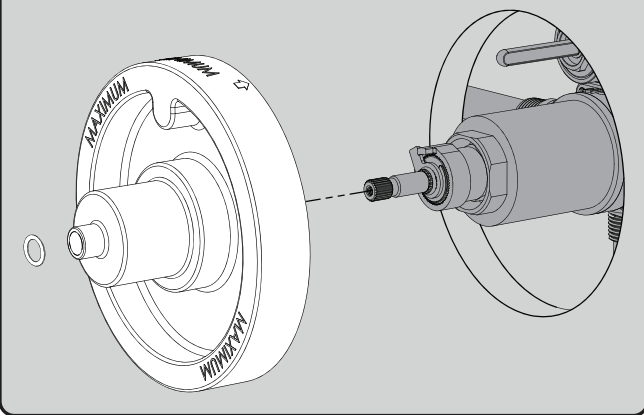
The maximum outlet temperature setting adjustment (Temperature Limit Stop [TLS]) of the Valve has been factory set at 110 °F. To adjust the limit of the maximum outlet temperature the Valve delivers, adjust the Valve's temperature limit stop (TLS) plate by following the steps below.

- Slip the retaining O-ring and the TLS plate towards the end of the spindle.
- With the water supplies "On", rotate the valve spindle clockwise to the maximum desired outlet temperature.
- Position the TLS plate so it contacts the lug and therefore restricts the clockwise rotation of the spindle.
- Slip the retaining O-ring back into the groove of the spindle to hold the TLS plate in place.
- Rotate the spindle counter-clockwise to the "Off" position.



NOTE: A thermometer can be held at the Valve outlet to aid in either checking the existing factory setting or reaching the desired outlet temperature.

12 Reinstall Rough-In Template over Valve to protect it during final wall preparation. Reinstall small O-Ring to secure Rough-In Template in place.



CPV-TP / CPV-TP-DV SERVICE INSTRUCTIONS

Service Instructions

Caution: Any repair or servicing of the Valve may effect the maximum outlet temperature setting of the Valve. After working on the Valve, make sure the maximum outlet temperature is set to the recommended setting of 110 °F.

Thermostatic/Pressure Balance (T/P) Cartridge Removal

- 1) Remove Trim from Valve. Close the Integral Stops of the Valve by turning the Stop Spindles clockwise.
- 2) With the valve in the "OFF" position, remove the Bonnet by unthreading with a Slip Joint Wrench. The Cartridge may come out with the Bonnet.
- 3) If necessary, remove the Cartridge from the Valve Body by pulling on the Valve spindle of the Cartridge. Verify that the Lower Cartridge Seal is in place within the Valve Cartridge, and not within the Valve Body. Inspect Lower Cartridge Seal with Integral Screens to verify it is debris free. If debris is present, remove Lower Cartridge Seal and clean Screen material.
- 4) Replace the Thermostatic/Pressure Balance (T/P) Cartridge if necessary. When replacing the Thermostatic/Pressure Balance (T/P) Cartridge, verify that the Lower Cartridge Seal is properly installed in the recess on the bottom of the Cartridge. This Lower Cartridge Seal is positioned over the HOT & COLD inlet waterways of the Valve Body.
- 5) Make sure the Large Bonnet O-ring seal is installed and seated properly on the Valve Bonnet. Reassemble the Valve Bonnet by threading it into the Valve Body with a Slip Joint Wrench. Final torque should be 150-168 in*lb. **Important:** Adjust the Valve's maximum outlet temperature to the recommended setting of 110 °F. See Temperature Limit Stop adjustment steps within this document.
- 6) Open the Integral Stops of the Valve by turning the Stop Spindles counter-clockwise. Check Valve for leaks.
- 7) Reassemble the Trim parts.

Spring Check Stop Parts Removal

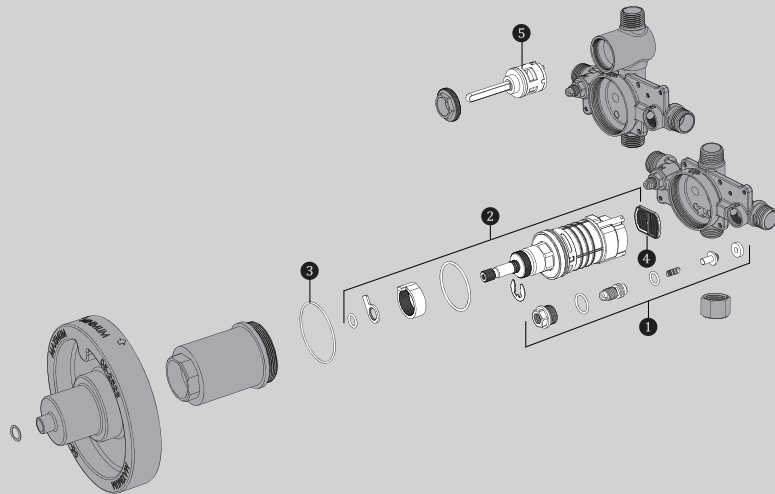
- 1) Remove Trim from Valve. Shut off HOT and COLD water supply lines to the inlets of the Valve.
- 2) Unscrew the Stop's Retaining Nut using a Socket Wrench equipped with a 9/16" (14mm) Deep Well Socket. Carefully remove the Retaining Nut w/ Spindle, Spring, and Poppet assembly. Clean and/or replace the necessary parts. Reassemble the parts, reversing the above procedure. Final torque should be 70-106 in*lb. Repeat procedure on the other Stop.
- 3) Turn on the HOT and COLD water supply lines. Check for leaks.
- 4) Reassemble the Trim Parts.

Diverter Cartridge Removal (if present)

- 1) Remove Trim from Valve. Close the Integral Stops of the Valve by turning the Stop Spindles clockwise.
- 2) Remove the Diverter Retaining Nut using a Socket Wrench equipped with a 13/16" (20mm) Deep Well Socket.
- 3) Remove Diverter Cartridge from Valve Body. Verify that the Lower Cartridge Seal is in place within the Diverter Cartridge, and not within the Valve Body.
- 4) Replace the Diverter Cartridge if necessary. When replacing the Diverter Cartridge, make sure that the mounting posts are aligned and engaged to the corresponding holes of the Valve Body.
- 5) Reassemble the Diverter Retaining Nut using a Socket Wrench equipped with a 13/16" (20mm) Deep Well Socket. Final torque should be 35-53 in*lb.
- 6) Open the Integral Stops of the Valve by turning the Stop Spindles counter-clockwise. Check for leaks.
- 7) Reassemble the Trim Parts.

CPV-TP / CPV-TP-DV REPAIR PARTS

SPEAKMAN®



ITEM #	PART #	DESCRIPTION
1	99610107	CHECK STOP REPAIR KIT
2	99871026	THERMOSTATIC/PRESSURE BALANCE (T/P) CARTRIDGE
3	99670878	BONNET O-RING
4	99670879	LOWER CARTRIDGE SEAL
5	99780235	VOLUME CONTROL/DIVERTER CERAMIC REPAIR CARTRIDGE



Our Goal is Simple — Help Our Customers!

We're Here For You
When You Need Us.

Visit Us Online

www.bestplumbingspecialties.com

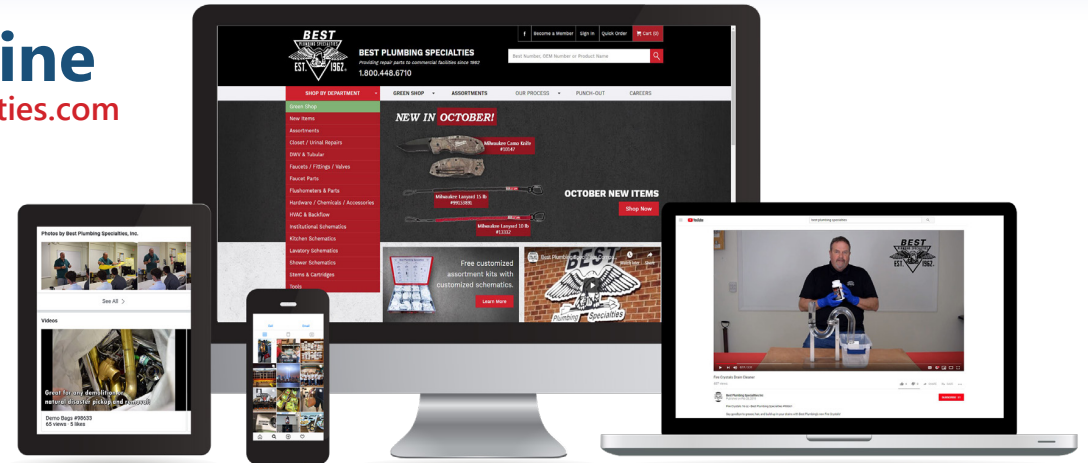
- Browse
- Shop
- Watch New Items Videos
- and more!

Not registered?

Sign up online or email

Marketing at:

marketing@bestplumbingonline.com



To learn more about our **new items every month**, connect with us on social media



[Facebook.com/bestplumbingspecialties](https://www.facebook.com/bestplumbingspecialties)



[youtube.com/user/bestplumbingonline](https://www.youtube.com/user/bestplumbingonline)



[bestplumbingspecialties](https://www.instagram.com/bestplumbingspecialties)

Need help identifying a part, or finding compatible solutions?



Call **1-800-448-6710** or email info@bestplumbingonline.com

(7 a.m. – 6 p.m EST) Monday- Thursday (7 a.m. – 5 p.m. EST) Fridays

Looking to place an order?



Shop Online, Contact Your Rep or Email: orders@bestplumbingonline.com

Subscribe to our email newsletter!

Every month we update you on our new and featured items for the month as well as updates on ongoing and future promotions!

Scan here to sign up for our newsletter



Your Account Rep is

DID YOU
KNOW WE
CARRY?



Scan here
for our latest
Promotion!

